

**Stop traveling on site for support!  
Let's stay Cosy!**



## Industrial Remote Access Router

The eWON Cosy (COmmunication made eaSY) is an industrial VPN router designed to offer easy and fully secure remote access, across the Internet, to machines and installations on customer sites or in the field. With eWON Cosy, Machines Builders, OEMs and System Integrators can troubleshoot machines remotely without going on site, drastically reducing support costs.

**Cosy** 1 2 3

# Why eWON Cosy is your best choice

## FIREWALL FRIENDLY OUTBOUND CONNECTION

Outbound Internet connection across the factory LAN using port 443 (HTTPS) or UDP 1194. Easy to set up with no firewall issues and only access to the machine LAN.

## WIZARD CONFIGURATION

Configuration wizard for quick and straightforward setup and deployment. No need to stop the machine while commissioning the eWON.

## INTEGRATED WIFI, CELLULAR CONNECTIVITY

WiFi and cellular modems allow Internet connectivity where factory/corporate LAN network is not available. They offer free access, high bandwidth, easy deployment (no cabling) and facilitates security network management.

## SECURE VPN CONNECTIVITY

Fully secure SSL-based VPN tunnel. The information exchanged during the communication is encrypted (SSL - 2048-bit keys) and only authenticated users can connect to the eWON.

## LAN SEGREGATION & NAT 1:1

Access only the devices connected to the LAN of the eWON, the corporate network is not accessible to the remote user. NAT 1:1 is available for mapping of the devices behind the eWON unit and allows easy communication between enterprise application (SCADA, MES) and the devices.

## CUSTOMER KEEPS CONTROL

VPN access can be controlled with external key switch.

## 2 FACTOR AUTHENTICATION

eCatcher enhances a secure access to your talk2M account thanks to DOUBLE FACTOR authentication.

## EASY COMMISSIONING WITH SD CARD

SD card to copy and load a configuration, backup/restore and auto-register to Talk2M.

## USB CONNECTIVITY

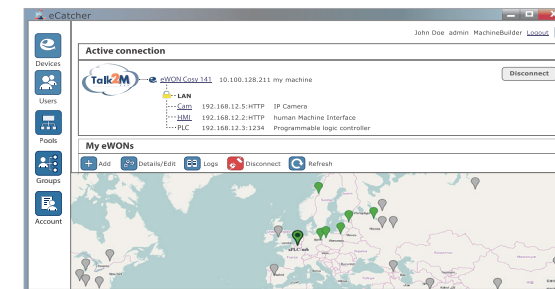
USB port allows remote access to USB devices.

## CONNECTION AUDIT TRAIL

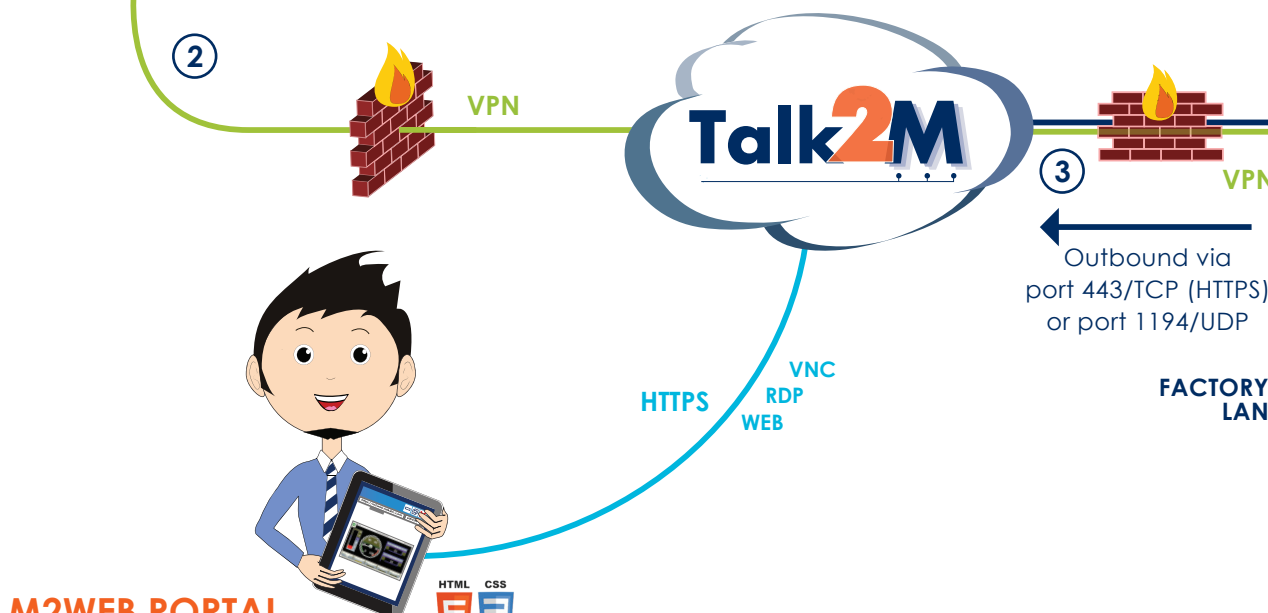
Our cloud-based connectivity service provides a connection report to keep track of when and how long each user has connected.



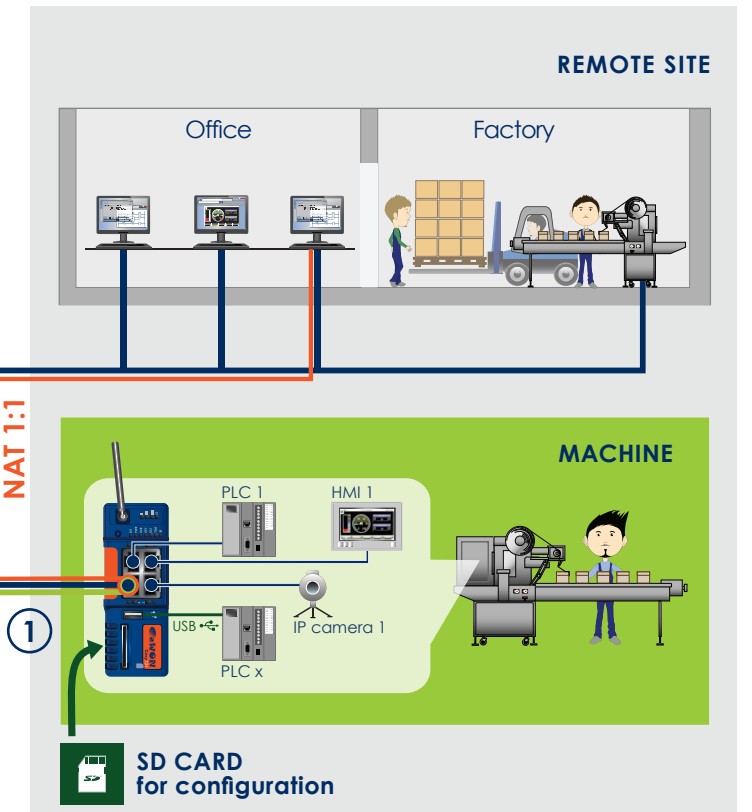
NEW Map with geolocation to quickly manage your remote sites.



Download eCatcher here [www.ewon.biz](http://www.ewon.biz)



**M2WEB PORTAL**  
Access securely your HMI and SCADA dashboard from your smartphone or tablet.  
Connect with M2Web on <http://m2web.talk2m.com>



### COMPATIBLE WITH MAJOR PLC BRANDS/PROTOCOLS



### HOW IT WORKS




- 1 The eWON Cosy is connected to the Talk2M server.
- 2 Using eCatcher, the engineer can log into his Talk2M account and connect to any device in 2 mouse clicks.
- 3 A secure VPN connection is established with full port forwarding to all the devices connected to the Cosy's LAN.

### TALK2M – THE FREE WEB CONNECTIVITY VPN SOLUTION

**TALK2M IS THE #1 SECURE INDUSTRIAL CONNECTIVITY SERVICE.** With redundant servers distributed all over the world, Talk2M offers a highly secure, reliable and scalable solution for connecting your machines remotely. To date, Talk2M manages thousands of user accounts and has reached + 4,000,000 successful VPN connections.




## Select your eWON Cosy 131

Cosy 123	Cosy 131 Ethernet	Cosy 131 WiFi	Cosy 131 Cellular
<b>Product Ref.</b>	 EC61330	 EC6133C	 EC6133D
<b>WAN connectivity</b>	LAN	LAN + WiFi 802.11 b/g/n	LAN + GSM/GPRS/EDGE/UMTS/HSPA+ modem
<b>Ethernet</b>	4x 10/100Mb (Configurable LAN/WAN)		
<b>USB</b>	✓		
<b>Input/Output</b>	2x DI, 1x DO		
<b>SD card reader</b>	✓		
<b>Power Supply</b>	12-24 V DC +/-20%, LPS		
<b>Temperature range</b>	-25°C to +70°C		
<b>Marking</b>	CE, UL		
<b>Warranty</b>	24 months		
<b>Mechanical, Standards &amp; Directives</b>	Download eWON Cosy 131 Datasheet from our website <a href="http://www.ewon.biz">www.ewon.biz</a>		

For alarms and data logging. Please refer to our Flexy product family.

## Connect with eWON's Talk2M FREE connectivity service

	Talk2M Free	Talk2M Pro
<b>Pricing</b>	Free	Yearly fee
<b>Unlimited no. of users and devices</b>	✓	✓
<b>No. of M2Web sessions</b>	3	Unlimited
<b>No. of concurrent eCatcher connections</b>	1	3
<b>Advanced Access Control</b>		✓
<b>Wake-up/Alarm SMS per month</b>		50
<b>SLA (99,6% availability, 4hr. max. consecutive downtime)</b>		✓
<b>Additional Traffic, SMS, concurrent connections</b>		✓

Accounts exceeding the allocated monthly bandwidth (1GB Free /6 GB Pro) are subject to data throttling (Free) or overage charges (Pro)

### Head Office

22 Av. Robert Schuman  
1400 Nivelles  
Belgium  
Tel: +32 67 895 800  
[info@ewon.biz](mailto:info@ewon.biz)

### North American Office

79 South 23rd Street  
Pittsburgh, PA 15203  
USA  
Tel: +1 (412) 586-5901  
[info@ewon.us](mailto:info@ewon.us)

### Japan Office

Dai 10 Tanaka Bldg, Room 3A-2  
Wada 3-54-5,  
Suginami-ku, 166-0012 Tokyo  
Japan  
Tel: +81-3-5929-8770  
[info@ewon.co.jp](mailto:info@ewon.co.jp)